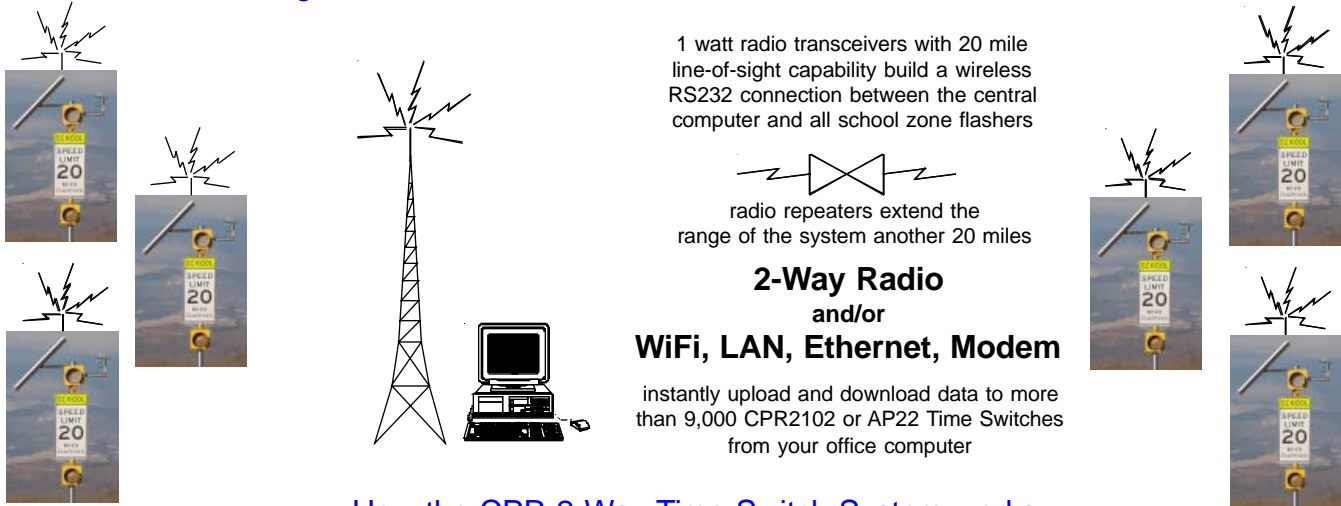


CPR & AP22, 2-Way Time Switch System

2-Way Radio, WiFi, Ethernet, Cell or Landline Modem

Two-way communication with all school zones



How the CPR 2-Way Time Switch System works

A computer with *Windows(tm) 2000 or XP* and the CPR III software, is programmed with time switch programming to control your school flashers for the entire school calendar.

This programming is downloaded to the CPR2102 or AP22 Time Switches over 900MHz radio, city-wide WiFi or Fiberoptic Ethernet network from a computer COM port, from a Palm Pilot, from any BLUETOOTH capable PDA or from a DT2100 Handheld Display.

The computer sends alphanumeric radio/WiFi messages once a week to reset the time and day in all CPR2102 or AP22 Time Switches and to verify correct programming.

Using a radio/WiFi network, the operator can upload and download programming to any CPR2102 or AP22 Time Switch for immediate two-way communications with any school flasher location.

Each CPR2102 or AP22 Time Switch runs its own program to turn on or off the school flasher.

Program up to 10 Master Groups for a total of 990 Groups (**optional**)

Program up to 99 different groups (each group has 1 Normal Day Plan, 19 Alternate Day Plans and an unlimited number of Annual Plans)

Program up to 99 different locations per group

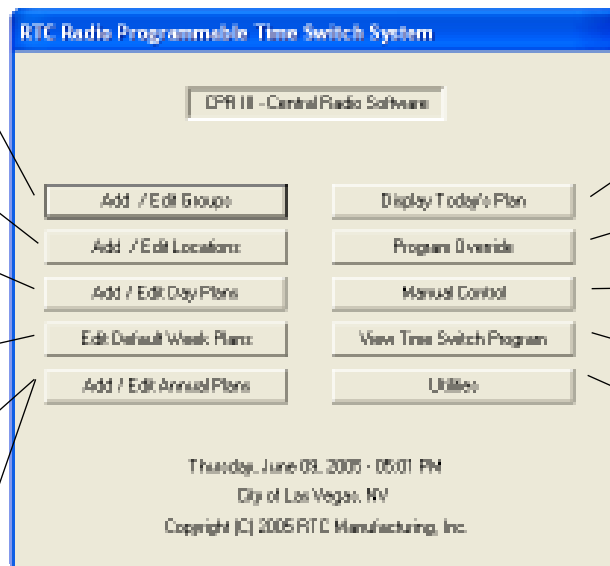
Program up to 20 Day Plans per Group including Normal school day, Early Out days, Summer School days, etc.

Default Week Plan - Normal Monday thru Friday school flasher schedule (runs automatically every week)

Annual Plans - The system uses exception day programming for Holidays, Early Out days, Vacation days, etc. for programming your entire school calendar

Vacation Plans - Program Vacation Plans for summer, winter and year round school breaks

CPR 2-Way Main Menu Screen



Display and print the program for any day of any year

Override any daily program due to inclement weather, special holidays, etc.

Manually control any school flasher from the computer keyboard

Read the program from any time switch

Utilities lets you configure your system

Download a complete program to any Group of time switches or to any individual time switch



"Serving the Traffic Signal Industry since 1987"

RTC Manufacturing, Inc.
P. O. Box 150189 * Arlington, TX 76015
www.rtc-traffic.com
(800) 782-8721 * Fax (800) 448-8850

CPR & AP22, 2-Way Programmable Time Switch

2-Way Programming from your office computer



CPR2102 Time Switch



AP22 Time Switch

ORDERING INFORMATION

Part Number	Description
503645	Model CPR2102R Time Switch, w/radio, antenna and CPC Harness
503644	Model AP22 Time Switch with CPC Harness, (radio or WiFi optional)
500900	Upgrade CPR2102 Pager Time Switch to CPR Radio/WiFi
503648	CPR Radio Remote w/Adapter to convert CPR2102 Pager to Radio
503646	CPR Radio Master, (one per system) includes antenna and power supply
503647	CPR Radio Repeater, includes antenna and power supply
501662	PDA Time Switch Programmer
503620	Model DT2100 Display Terminal (upload and download programs)
503626	Model DA2100 Audible/Visual Alarm (confirms when data is being received)
501638-R	CPR III Central Radio/Wi-Fi Software

Program from a PDA or Netbook

- Time switch programming is transmitted over two-way 900MHz spread spectrum radio, a city wide WiFi or fiberoptic ethernet network.
- One wireless RS232 network can program up to 9,801 time switches.
- Download complete school calendar programming over the 2-way network to Model AP22 Time Switch. The Model AP22 has a keyboard and LCD display.
- Download Default Week Plan programming over the 2-way network to CPR2102 Time Switch. (normal Monday through Friday school schedule)
- Download Alternate Week Plan programming over the 2-way network to CPR2102 Time Switch. (Holidays, Early Out days, Summer School days, etc.)
- Download Override Plan programming over the 2-way network to CPR2102 Time Switch. (overrides regular program for one day to adjust for delayed or cancelled school due to bad weather, etc.)
- Power back-up maintains timekeeping and program for more than 6 months.
- Search-back feature automatically controls relay output when downloading a program.
- Indicators display the following information on CPR2102 Time Switch:
 - Power applied and operating
 - Communication being received
 - Unit failed to receive a communication since Saturday
 - Group and Location address
 - Running one of the following programs:
 - empty default week plan
 - programmed default week plan
 - alternate week plan
 - override plan
 - Relay on or off
- CPR2102 and AP22 enclosure measures 3.7" w x 7.5" h x 1.55" d (without CPC connector).
- Manual push-button or keyboard controls relay output.
- Direct upload and download programming from a laptop computer.
- Upload and Download programming from a BLUETOOTH enabled PDA.
- Dual power supply, 120VAC and 12VDC.

For more information on the
CPR III Radio, WiFi, Ethernet or Modem
Programmable Time Switch System,
call Toll Free (800) 782-8721



RTC Manufacturing, Inc.

P. O. Box 150189 * Arlington, TX 76015

www.rtc-traffic.com

(800) 782-8721 * Fax (800) 448-8850